

Citroën Jumpy

PolarLine[®]
by Novaplast



UNI EN ISO 9001:2008
UNI EN ISO 14001:2004



 **NOVAPLAST**[®]
allestimenti isothermici

Citroën Jumpy

Available for IN (0+°C) and IR (-20°C)

PolarLine[®]
NOVAPLAST
allestimenti isothermici

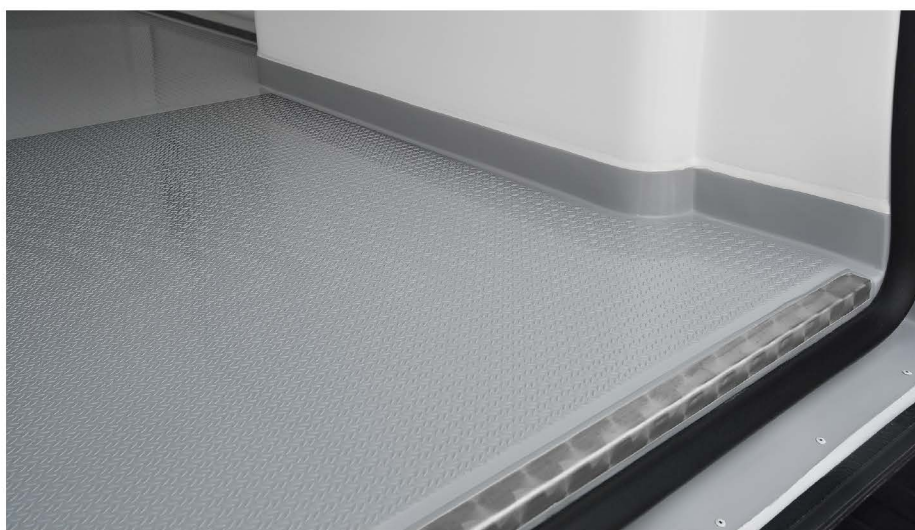
	M	XL
Wheelbase (mm)	3.275	3.275
Roof	Low	Low
Volume (m3)	3,28	3,90
Load floor length (mm)	2.070	2.440
Load floor width (mm)	1.205/1.430	1.205/1.430
Load floor height (mm)	1.180/1.240	1.180/1.240
Side door width (mm)	810	810
Side door height (mm)	1.080	1.080
Rear door width (mm)	1.205	1.205
Rear door height (mm)	1.140	1.140
Width between wheel arches	1.205	1.205

FEATURES

- Polyurethane foam panels, thickness 60mm
- Wood-reinforced floor
- Grey non-skid "tub" floor
- Reinforced roof for refrigeration unit application
- Double seal on rear and side doors
- Suitable for IR transport (-20°C) with the application of an additional side door

ACCESSORIES

- LED lights
- Walls reinforced for shelves
- Roof and wall construction for transporting meats with stainless steel rails and hooks
- Drain valve with drain pipe
- Anti-drip edges on the doors
- VTR liquid collection reservoir
- Cargo restraint profiles with straps
- IR rear door (-20 ° C)
- Customizable setups upon request



NOVAPLAST
allestimenti isothermici

Località Ferriera, 62
 06089 Torgiano (PG) - ITALY
 Tel. +39 075.599.67.01 Fax +39 075.599.74.49
 info@novaplastpg.it
 www.novaplastpg.it

Distributor's stamp